

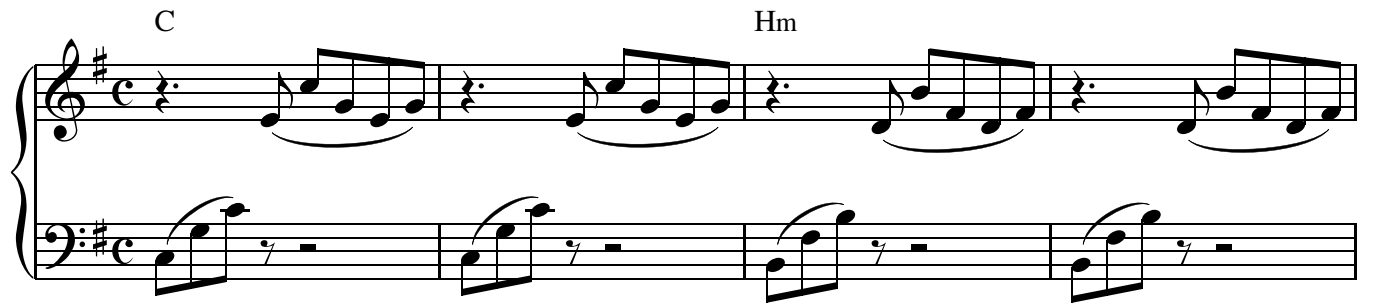
1433 Верить – это значит

Г. Самсоненко

Вот дело Божие, чтобы вы веровали в Того, Кого Он послал (Ин. 6, 29)

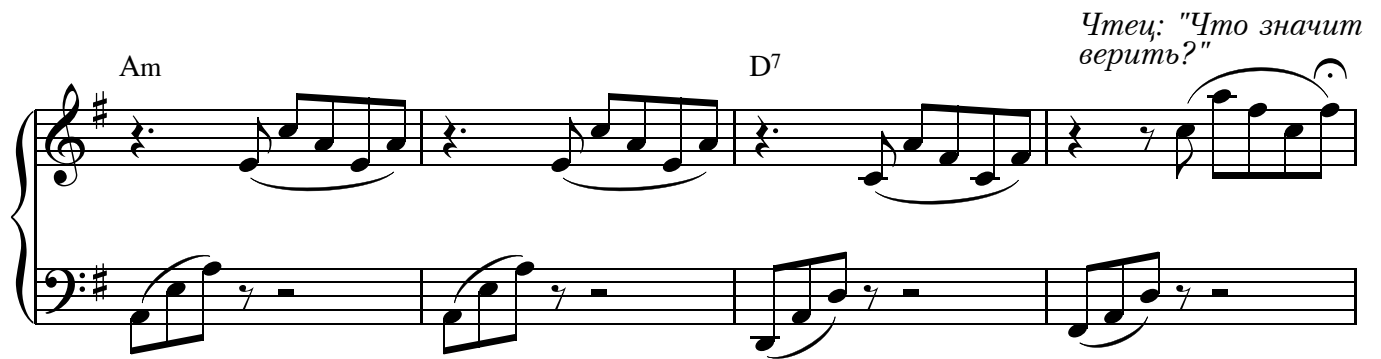
Н. Неверов

C Hm



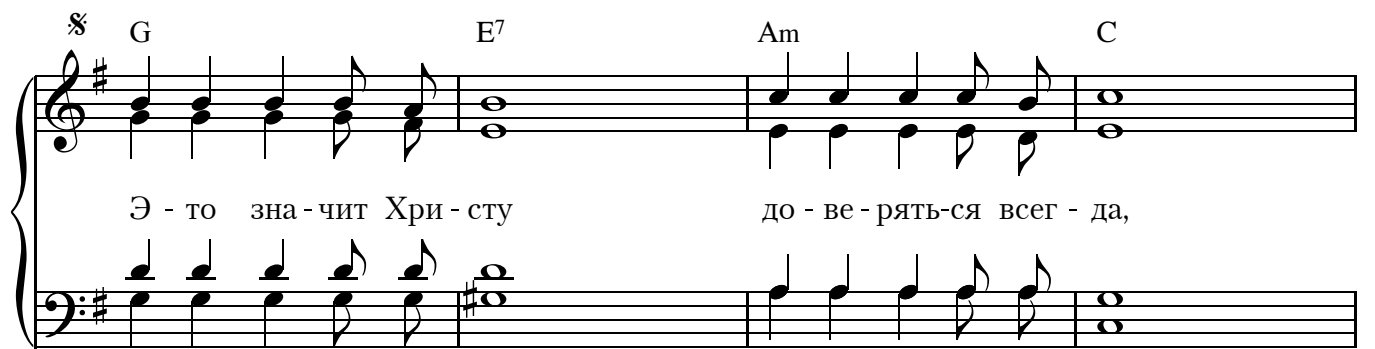
Am D7

Чтец: "Что значит
верить?"



§ G E7 Am C

Э - то зна - чит Хри - сту до - ве - рять - ся всег - да,



§



F A⁷ *mf* Dm

В скор-би и в ра - до - сти ве - рить. И, чрез жизнь к до - ро -

mf *mf*

Detailed description: This system contains the first two staves of music. The top staff is the vocal line, starting with a treble clef and a key signature of one sharp (F#). It features a melodic line with lyrics: "В скор-би и в ра - до - сти ве - рить. И, чрез жизнь к до - ро -". Above the staff are chord markings: F, A7, and mf Dm. The bottom staff is the piano accompaniment, starting with a bass clef and the same key signature. It features a bass line with chords and a right-hand part with arpeggiated chords. A dynamic marking of mf is present above the right-hand part.

Gm *f* H Dm

гим не - бе - сам про - хо - дя, Ве-рить,

f *f*

Detailed description: This system contains the second two staves of music. The top staff is the vocal line, continuing from the first system. It features a melodic line with lyrics: "гим не - бе - сам про - хо - дя, Ве-рить,". Above the staff are chord markings: Gm, f H, and Dm. The bottom staff is the piano accompaniment, continuing from the first system. It features a bass line with chords and a right-hand part with arpeggiated chords. A dynamic marking of f is present above the right-hand part.

A⁷ | 1. Dm | 2. D

ve - рить, - ве - рить. ве - рить.

Detailed description: This system contains the first two lines of music. The top line is a vocal line in treble clef with a key signature of one sharp (F#) and a 4/4 time signature. It begins with a whole note chord of A7, followed by a half note of Dm, and then a half note of D. The lyrics "ве - рить, - ве - рить. ве - рить." are written below the notes. The bottom two lines are piano accompaniment in bass clef, featuring a steady eighth-note bass line and chords that support the vocal melody.

1. | 2.

Detailed description: This system contains the third and fourth lines of music. The top line is a piano melody in treble clef, consisting of eighth-note runs. The bottom line is a piano accompaniment in bass clef, featuring a steady eighth-note bass line with chords.

D/C G/H C

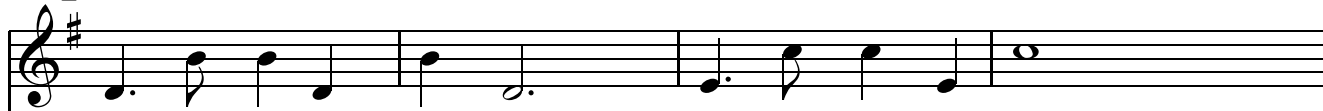
Detailed description: This system contains the fifth and sixth lines of music. The top line is a piano melody in treble clef with eighth-note runs. The bottom line is a piano accompaniment in bass clef with a steady eighth-note bass line and chords.

G/D D⁷ G

Detailed description: This system contains the seventh and eighth lines of music. The top line is a piano melody in treble clef with eighth-note runs. The bottom line is a piano accompaniment in bass clef with a steady eighth-note bass line and chords.

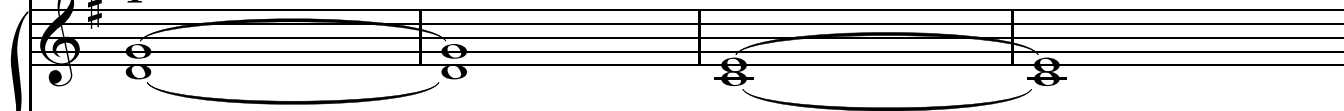
mp G

Am



1. Ве - рить - э - то зна - чит злу до - бром пла - тить,
 2. Ве - рить - э - то ближ - них от ду - ши про - щать,
 3. Ве - рить - э - то зна - чит со Хри - стом ид - ти,

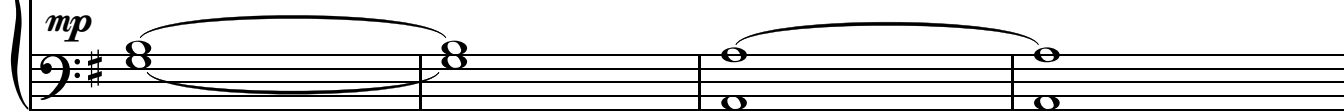
mp



MMM...

MMM...

mp



mp



mp



D7

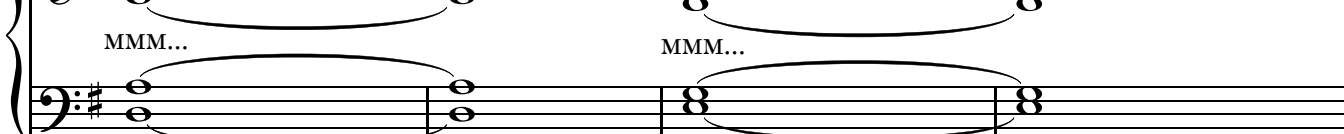
Em



1. Ве - рить - э - то зна - чит ис - крен - не лю - бить,
 2. Ма - лы - е о - шиб - ки чтоб не за - ме - чать,
 3. Злы - е по - но - ше - нья с ра - до - стью не - сти.

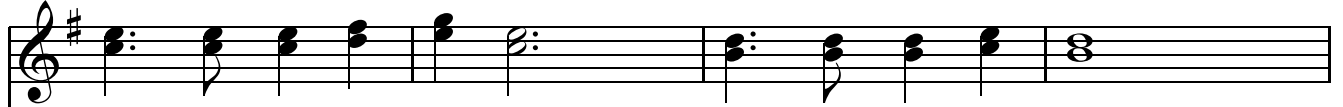
MMM...

MMM...

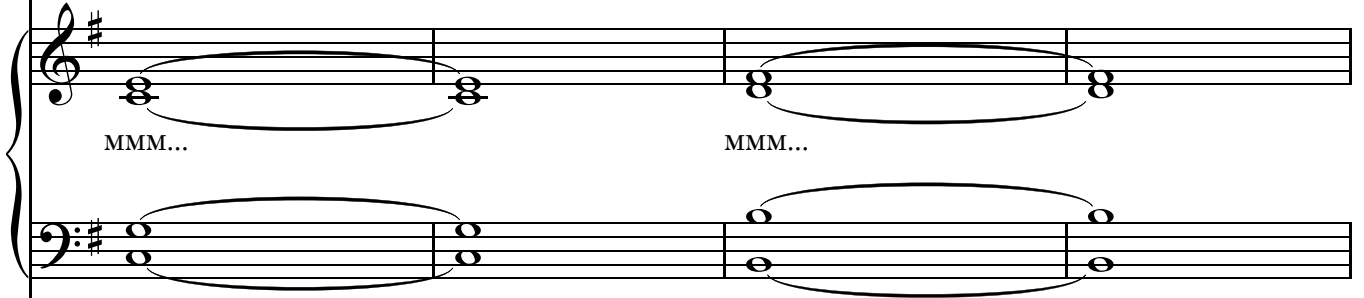


C

Hm

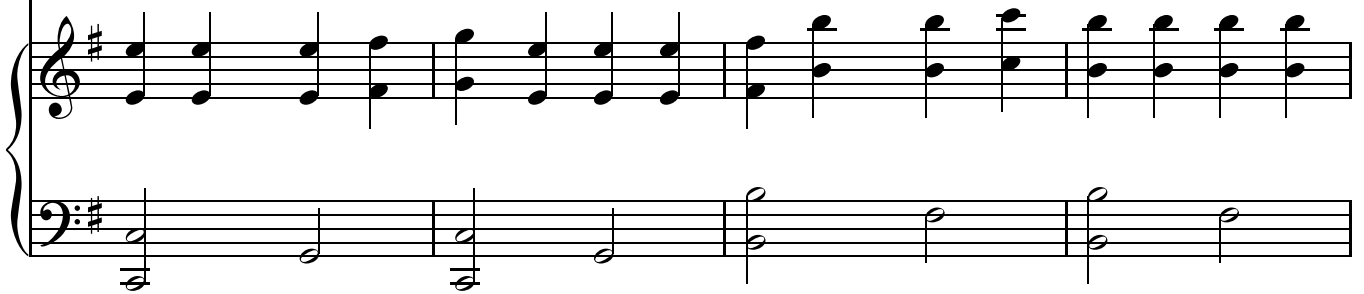


1. Ве - рить - э - то зна - чит про - хо - дить свой путь,
 2. Без - воз - мезд - но лю - дям до - бро - ту да - рить,
 3. Ве - рить - э - то ви - деть веч - но - сти чер - тог,



МММ...

МММ...

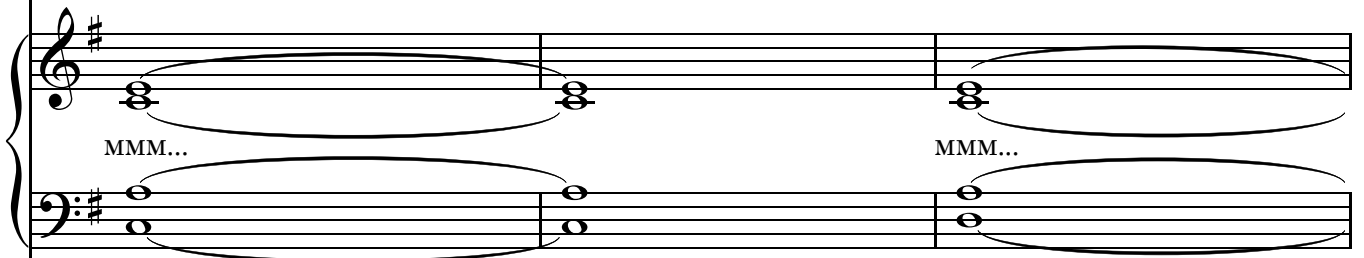


Am

D7

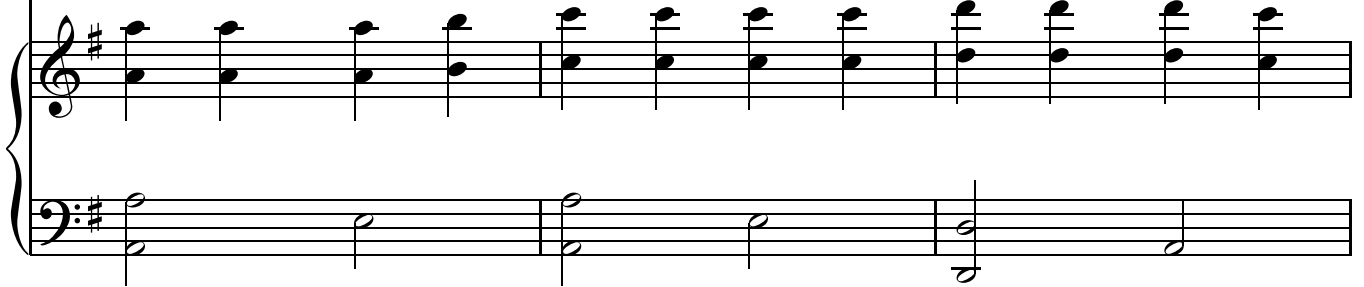


1. Зна - я Бо - жью прав - ду, зна - я жиз - ни
 2. Гиб - ну - щи - е ду - ши бра - тьев по - лю -
 3. Где с лю - бо - вью при - мет пи - ли - гри - мов



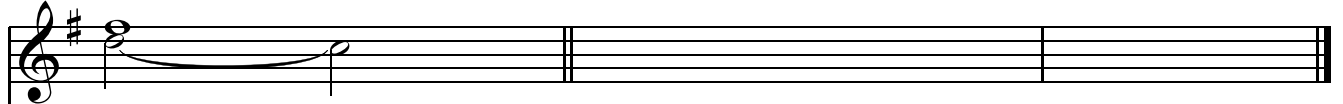
МММ...

МММ...



rit.

D.S. al Coda [3.]



1. суть.
2. бить.
3. Бог.

ве - рить.

rit.

D.S. al Coda [3.]