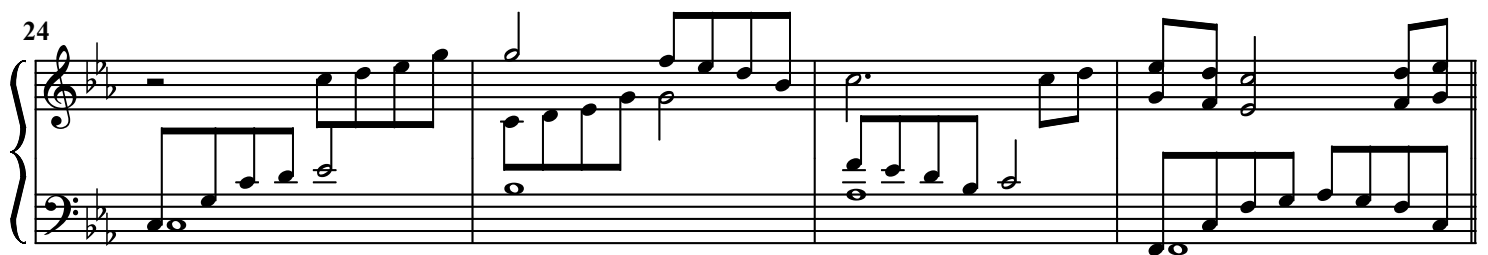
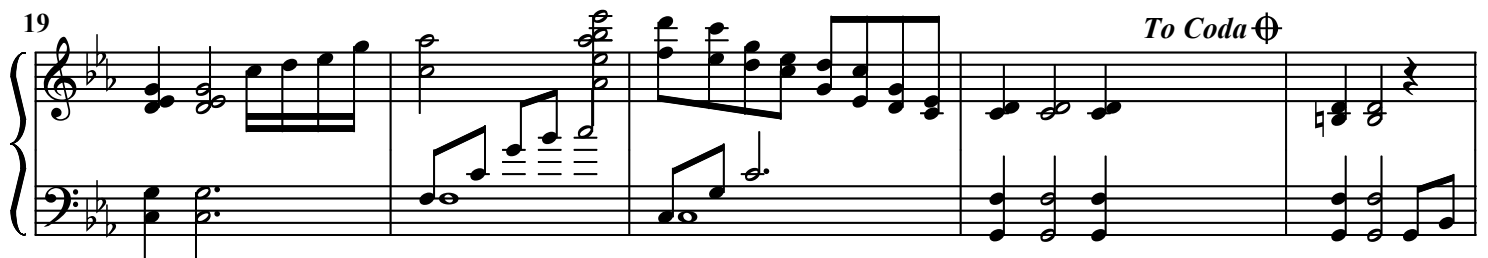
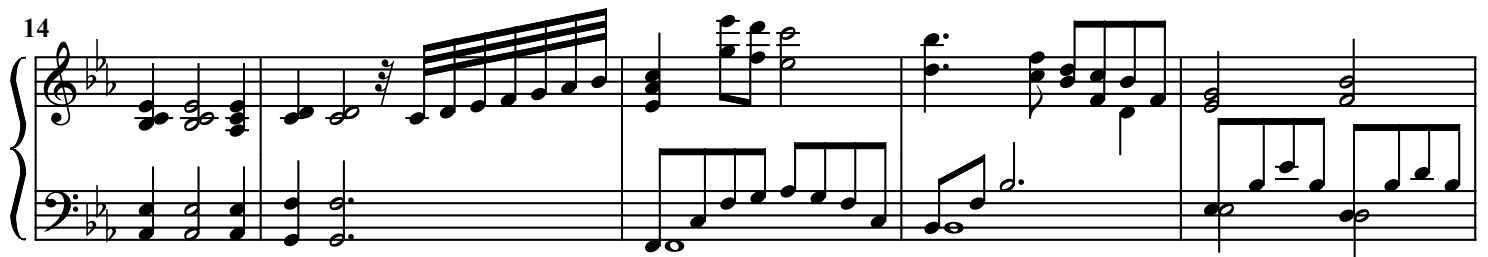
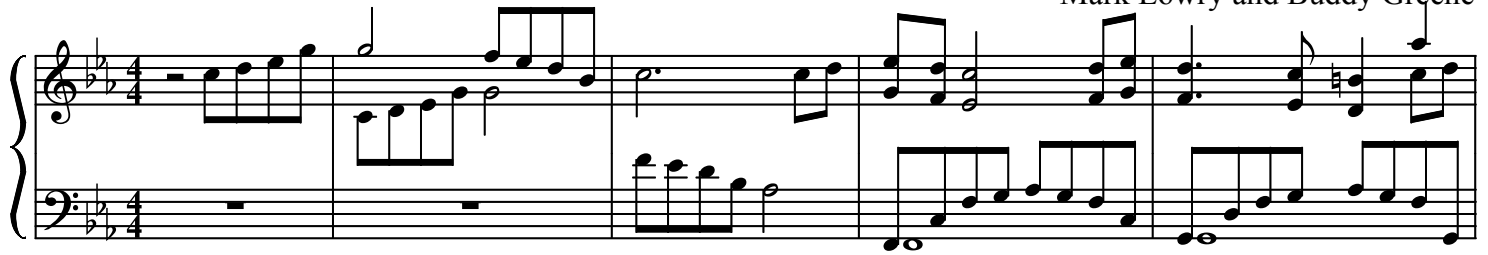


Знала ль Ты, Мария?

Mark Lowry and Buddy Greene



32

Measures 32-34. Treble clef: continuous eighth-note ascending scale. Bass clef: half-note ascending scale (measures 32-33), then rests and chords (measure 34).

35

Measures 35-36. Treble clef: continuous eighth-note ascending scale. Bass clef: half-note ascending scale.

37

Measures 37-39. Treble clef: continuous eighth-note ascending scale. Bass clef: rests and chords (measures 37-38), then a quarter-note ascending scale (measure 39).

40

Measures 40-43. Treble clef: chords and eighth-note patterns. Bass clef: chords and a half-note ascending scale (measure 43).

44

Measures 44-47. Treble clef: eighth-note patterns and a key signature change to D major (measure 46). Bass clef: chords and a half-note ascending scale (measure 47).

48

Measures 48-52. Treble clef: eighth-note patterns and chords. Bass clef: chords and a half-note ascending scale (measure 52).

53

Measures 53-56. Treble clef: eighth-note patterns and chords. Bass clef: chords and a half-note ascending scale (measure 56).

57

Measures 57-61. Treble staff: measures 57-58 feature complex chords with sharps; measures 59-61 feature arpeggiated chords. Bass staff: measures 57-58 feature arpeggiated chords; measures 59-61 feature arpeggiated chords.

62

Measures 62-66. Treble staff: measures 62-63 feature arpeggiated chords; measures 64-65 feature arpeggiated chords; measure 66 features a complex chord. Bass staff: measures 62-63 feature arpeggiated chords; measures 64-65 feature arpeggiated chords; measure 66 features a complex chord.

67

Measures 67-70. Treble staff: measures 67-68 feature arpeggiated chords; measures 69-70 feature arpeggiated chords. Bass staff: measures 67-68 feature arpeggiated chords; measures 69-70 feature arpeggiated chords.

71

Measures 71-75. Treble staff: measures 71-72 feature arpeggiated chords; measures 73-74 feature arpeggiated chords; measure 75 features a complex chord. Bass staff: measures 71-72 feature arpeggiated chords; measures 73-74 feature arpeggiated chords; measure 75 features a complex chord.

76

Measures 76-81. Treble staff: measures 76-77 feature arpeggiated chords; measures 78-79 feature arpeggiated chords; measures 80-81 feature arpeggiated chords. Bass staff: measures 76-77 feature arpeggiated chords; measures 78-79 feature arpeggiated chords; measures 80-81 feature arpeggiated chords.

82

D.S. al Coda *Coda*

Measures 82-88. Treble staff: measures 82-83 feature arpeggiated chords; measures 84-85 feature arpeggiated chords; measures 86-87 feature arpeggiated chords; measure 88 features a complex chord. Bass staff: measures 82-83 feature arpeggiated chords; measures 84-85 feature arpeggiated chords; measures 86-87 feature arpeggiated chords; measure 88 features a complex chord.

89

Measures 89-90. Treble staff: measures 89-90 feature arpeggiated chords. Bass staff: measures 89-90 feature arpeggiated chords.