

# What Do You See?

KEN PARKER  
arr. by Bob Krogstad

Moderately

A<sup>b2</sup> A<sup>b</sup> E<sup>b</sup> D<sup>b</sup> A<sup>b2</sup> A<sup>b</sup> E<sup>b</sup> D<sup>b</sup>  
A<sup>b</sup> A<sup>b</sup> A<sup>b</sup> A<sup>b</sup>

The first system of piano accompaniment consists of two staves. The right hand plays chords in a 4/4 time signature, with dynamics *mp* and *mf*. The left hand plays a simple eighth-note bass line.

**A**  
*mf*

The first system of the vocal line is a single staff with a melody in 4/4 time, starting with a repeat sign. The dynamic is *mf*.

Think - ing of a sta - ble and the child of Beth - le - hem Re -  
Al - so in the sta - ble you see Jo - seph stand - ing there, 7

*mp* Second time only

The second system of the vocal line shows a long note in the right hand, marked *unis.* (unison).

Ooo

*mp*

The piano accompaniment for the second system features a long note in the right hand and a simple bass line in the left hand, with a dynamic of *mp*.

A<sup>b2</sup> A<sup>b</sup> E<sup>b</sup> D<sup>b</sup> A<sup>b2</sup> A<sup>b</sup> D<sup>b</sup>  
A<sup>b</sup> A<sup>b</sup> A<sup>b</sup> A<sup>b</sup>

The third system of piano accompaniment continues with chords in the right hand and a bass line in the left hand, following the same rhythmic pattern as the first system.

mem - ber - ing those gath - ered at the scene: The  
 He would still re - call the an - gel's words; Mi -

*div.*

ooo

A<sup>b2</sup> A<sup>b</sup> A<sup>b</sup> C D<sup>b2</sup> D<sup>b</sup>

Detailed description: This system contains the first two lines of music. The top line is a vocal melody in G minor, with lyrics: "mem - ber - ing those gath - ered at the scene: The He would still re - call the an - gel's words; Mi -". The second line is a piano accompaniment featuring a long, expressive melodic line in the right hand, marked "div." (divisi), and a bass line in the left hand. The third line shows guitar chords: A<sup>b2</sup>, A<sup>b</sup>, A<sup>b</sup> C, D<sup>b2</sup>, and D<sup>b</sup>. The bottom line is a piano accompaniment with a steady bass line and chords in the right hand.

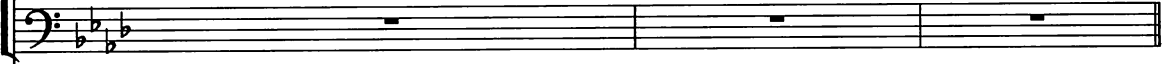
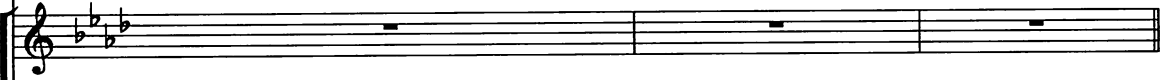
shep - herds and the wise - men and the par - ents of the Child— A -  
 rac - u - lous this birth and so mi - rac - u - lous the Child, γ

B<sup>b</sup>m<sup>2</sup> B<sup>b</sup>m D<sup>b</sup> E<sup>b</sup> E<sup>b</sup>

Detailed description: This system contains the third line of music. The top line is a vocal melody in G minor, with lyrics: "shep - herds and the wise - men and the par - ents of the Child— A - rac - u - lous this birth and so mi - rac - u - lous the Child, γ". The second line is a piano accompaniment with a long, expressive melodic line in the right hand and a bass line in the left hand. The third line shows guitar chords: B<sup>b</sup>m<sup>2</sup>, B<sup>b</sup>m, D<sup>b</sup>, E<sup>b</sup>, and E<sup>b</sup>. The bottom line is a piano accompaniment with a steady bass line and chords in the right hand.



bout the Ba - by I would ask\_\_ them, "What do you see?"  
In this Child\_\_ he saw the prom - ised\_\_ A - noint - ed One.



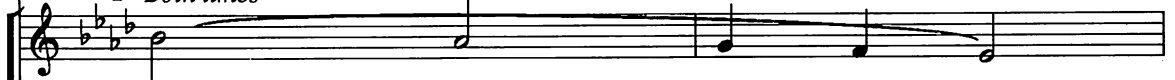
$A^b$   $D^b$   $D^b$   $A^b$   $D^b$   $E^b$   
 $C$   $B^b$   $B^b$   $E^b$   $E^b$   $E^b7$

**B**

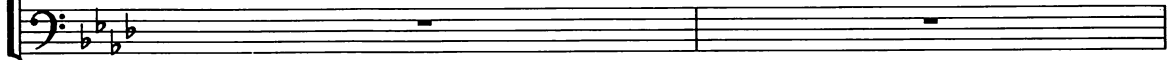


Lightly Look - ing at the wise\_\_ men\_\_ I know they see a King For  
Just one oth - er in - vi - ta - tion was there on that night, To

*mp* Both times



Ooo



$A^b2$   $A^b$   $E^b$   $D^b$   $A^b2$   $A^b$   
 $A^b$   $A^b$   $A^b$   $A^b$   $A^b$   $A^b$

their ex - pres - sions and their gifts well show;  
shep - herds in the fields a - lone it came;

ooo *div.*

A<sup>b</sup>2                      A<sup>b</sup>                      A<sup>b</sup>  
C                      D<sup>b</sup>2                      D<sup>b</sup>

And I look at Ma - ry and I see her beam - ing face,  
As they stood be - fore the Child I still won - der what they saw—

*mp*

Ah

B<sup>b</sup>m<sup>2</sup>                      B<sup>b</sup>m                      D<sup>b</sup>  
E<sup>b</sup>                      E<sup>b</sup>  
D<sup>b</sup>

She's caught up in won - der at her first - born Child's em - brace! —  
 Could they un - der - stand this was the Sav - ior, Christ the Lord? —

ooo doo wah.

$A^b$   
C  $D^b$   $D^b6$   
 $E^b$   $E^b$

**More!**

What do you see? — What do you see? — What do you

$A^b$   $D^b2$   $D^b$   $A^b$   $E^b$   $E^b$

*f* *mf*

C

see? What do you feel?

*f* *unis.* *3* *div.*

I see a Sav - ior! My love for

*f* *unis.* *3* *div.*

A<sup>b</sup> D<sup>b</sup>maj<sup>7</sup> A<sup>b</sup> E<sup>b</sup> E<sup>b</sup> B<sup>b</sup>m D<sup>b</sup> E<sup>b</sup> E<sup>b</sup>7

*f* *3*

What will you do? What will you

Him! I'll trust my life to Him! —

A<sup>b</sup> A<sup>b</sup> E<sup>b</sup> A<sup>b</sup> G<sup>b</sup> A<sup>b</sup> A<sup>b</sup>7 G<sup>b</sup> D<sup>b</sup> D<sup>b</sup> B<sup>b</sup>m<sup>7</sup>

*3*

1. Repeat to p. 109

be?

so thank-ful to Him! \_\_\_\_\_

*A<sup>b</sup>* *E<sup>b</sup>* *E<sup>b</sup>7* *A<sup>b</sup>* *D<sup>b</sup>6* *A<sup>b</sup>* *A<sup>b</sup>* *A<sup>b</sup>* *D<sup>b</sup>6* *A<sup>b</sup>* *A<sup>b</sup>* *Repeat to p. 109*

*mf*

2. D

What do you see?

Him, to Him I see a

*A<sup>b</sup>* *D<sup>6</sup>* *E* *A* *Second time only*

What do you feel? What will you do?

Sav - ior! my love for Him! I'll trust my

*Second time only* **ff**

Detailed description: This system contains the first two lines of the musical score. It features a vocal line with lyrics, a piano line with chords and melodic fragments, and a grand staff piano accompaniment. The key signature has three sharps (F#, C#, G#) and the time signature is 3/4. A triplet of eighth notes is marked with a '3' above it. The piano accompaniment includes a section marked 'Second time only' and 'ff' (fortissimo).

What will you be? What do you

life to Him! So thank-ful to Him!

*Repeat to p. 115*

*1. (Play) Repeat to p. 115* **f**

Detailed description: This system contains the second two lines of the musical score. It continues the vocal and piano parts from the first system. The lyrics are: 'What will you be? What do you life to Him! So thank-ful to Him!'. The piano accompaniment features a section marked 'Repeat to p. 115' and '1. (Play) Repeat to p. 115' with a dynamic marking of 'f' (forte). A triplet of eighth notes is marked with a '3' above it.



2. E A little broader

What do you see?

him, thank-ful to Him!

I see a

2. A  $E^b6$   $F$   $B^b$   $E^b\text{maj}7$

What... do you feel? What will you

Sav - ior! My love for Him!

div. *div.*

$B^b$   $F$   $F$   $C\text{m}7$   $C\text{m}7$   $F$   $F7$   $B^b$   $E^b\text{maj}7$   $E^b$   $F$

do? what will you be? \_\_\_\_\_

I'll trust my life to Him! \_\_\_\_\_

*Fm*<sup>7</sup> *Bb*<sup>7</sup> *A<sup>b6</sup>* *E<sup>b</sup>* *Cm*<sup>7</sup> *B<sup>b</sup>* *F* *Gm* *F*

3

So thank - ful to Him! \_\_\_\_\_

So thank - ful to Him, So thank - ful to Him! \_\_\_\_\_

*E<sup>b</sup>* *F* *E<sup>b6</sup>* *F<sup>7b9</sup>* *B<sup>b</sup>* *Cm* *Gm*<sup>7</sup> *D* *Cm*<sup>7</sup> *F<sup>7</sup>* *B<sup>b</sup>* *Fm*<sup>7</sup> *B<sup>b</sup>*