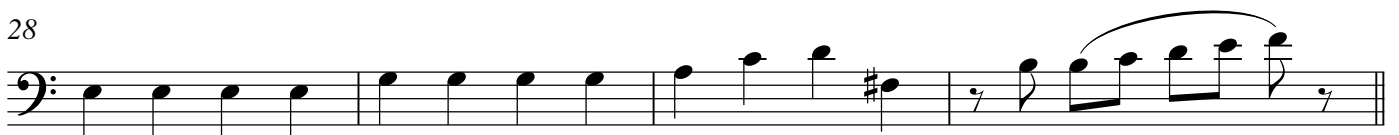
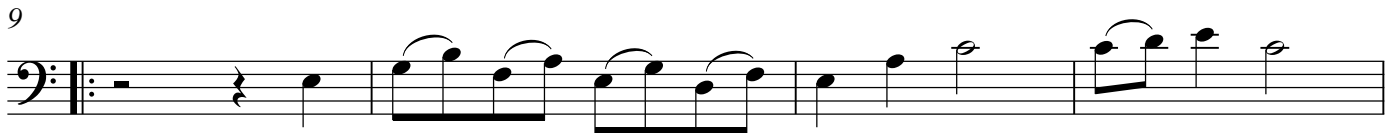


Bassoon

Gott wurde...



Bassoon

36

The musical notation for measure 36 is written on a single staff in bass clef. It begins with a series of eight eighth notes, each with an accent mark above it, grouped into two pairs of four. The notes are: G2, F2, E2, D2, C2, B1, A1, and G1. This is followed by another group of eight eighth notes, also with accents, consisting of: F2, E2, D2, C2, B1, A1, G1, and F2. The measure concludes with a quarter note G1, a quarter note F2, and a final half note G1. The staff ends with a double bar line and repeat dots.