

# Полин - звізда

В.Кішкова

$\text{♩} = 72$

Ой, ве - ли - ке го ре на Вкра -

Soprano

Alto

ї - ні ста ло: спо - ло - хом із

не ба по - лин зві - зда у па -

Detailed description: This system contains four staves. The top staff is a vocal line in G major (one flat) with lyrics: "не ба по - лин зві - зда у па -". The melody starts on G4, moves to A4, B4, then descends to G4, F4, E4, D4, C4. The second and third staves are treble clef accompaniment staves. The fourth staff is a bass clef accompaniment staff with chords: G2-B2, G3-B3, G2-B2, G3-B3, G2-B2.

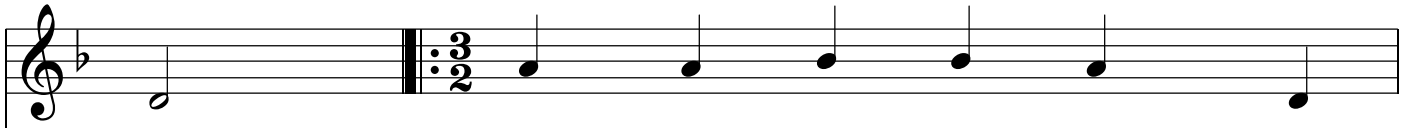
ла. 2.І у - же не во ди,  
6.Ой, як ста - нуть сльо зи

Detailed description: This system contains four staves. The top staff is a vocal line with lyrics: "ла. 2.І у - же не во ди, 6.Ой, як ста - нуть сльо зи". The melody for the second part starts on G4, moves to A4, B4, C5, D5, E5, then descends to D5, C5, B4, A4, G4. The second and third staves are treble clef accompaniment staves. The fourth staff is a bass clef accompaniment staff with chords: G2-B2, G3-B3, G2-B2, G3-B3, G2-B2.

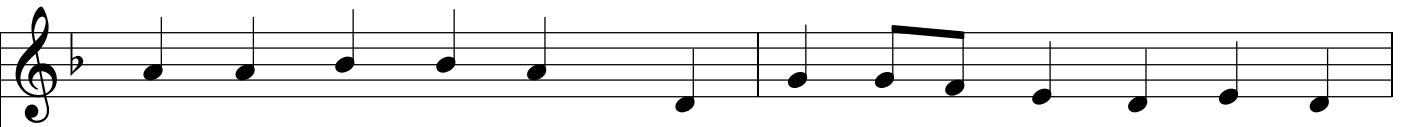
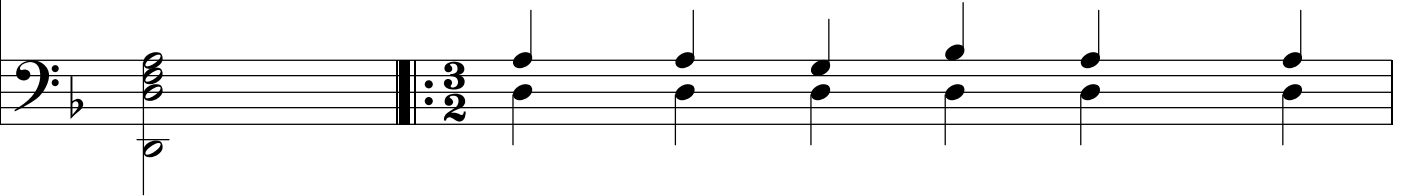
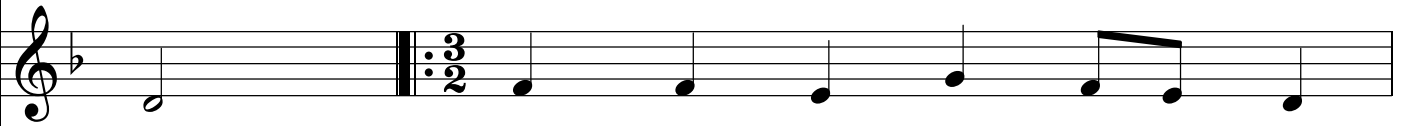
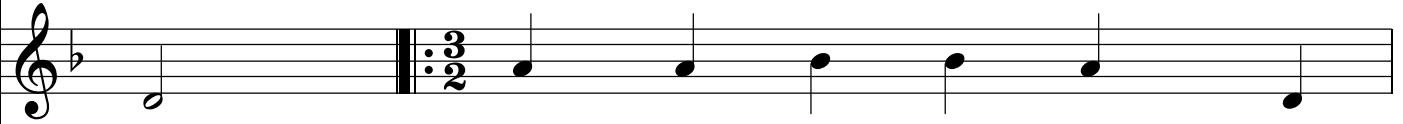
а \_\_\_\_\_ сльо - зи рі \_\_\_\_\_ ко \_\_\_\_\_ ю те - чуть \_\_\_\_\_  
 свя \_\_\_\_\_ то - ю во \_\_\_\_\_ до \_\_\_\_\_ ю, так при \_\_\_\_\_

вУ - кра - ї \_\_\_\_\_ ні слі - дом за зві - здо -  
 йде спа - сі \_\_\_\_\_ ння слі - дом за бі - до -

♩ = 96

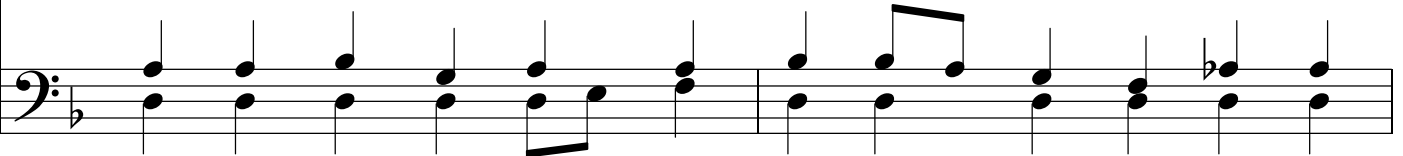
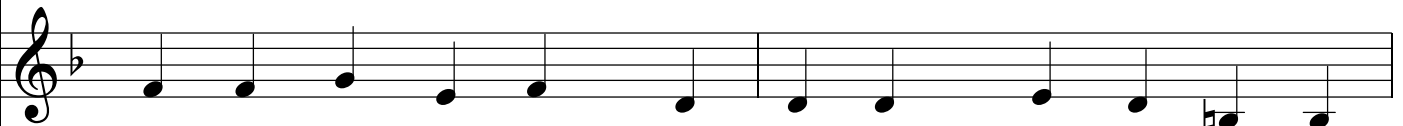
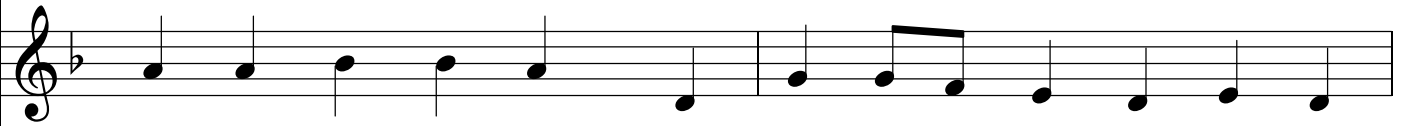


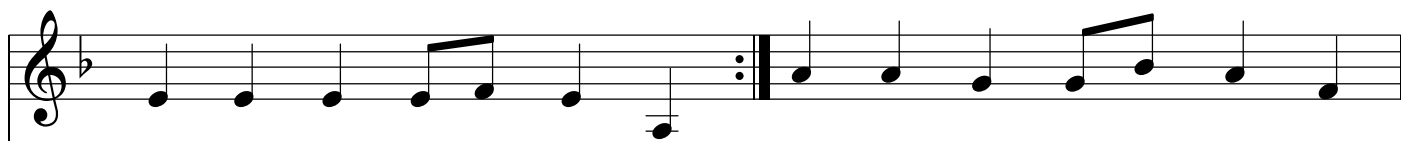
ю. 3. Стог - нуть в лі - сі пта - хи,  
ю. 4. Де і - ти шу - ка - ти



тра - ви по - чор - ні - ли, бо їх гір - ко - то - ю  
нам во - ди жи - во - ї, що за го - їть ра - ни

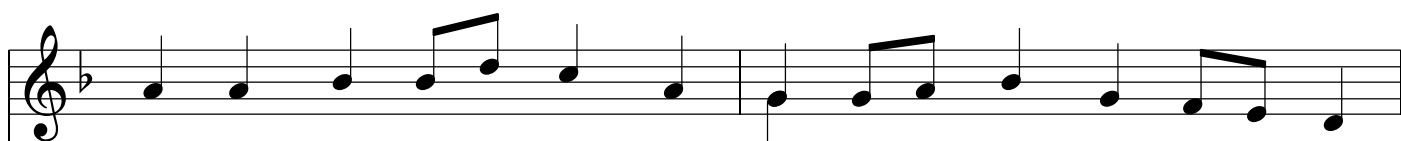
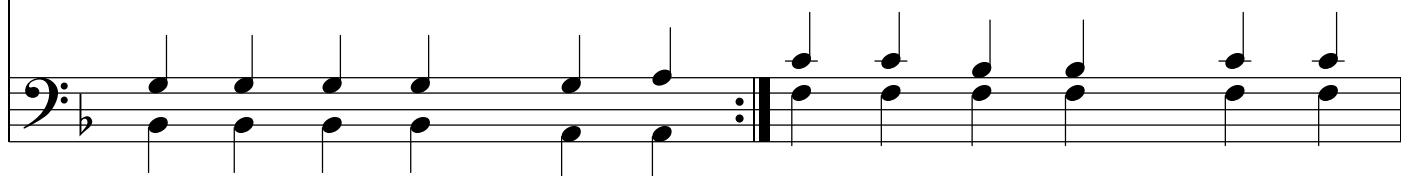
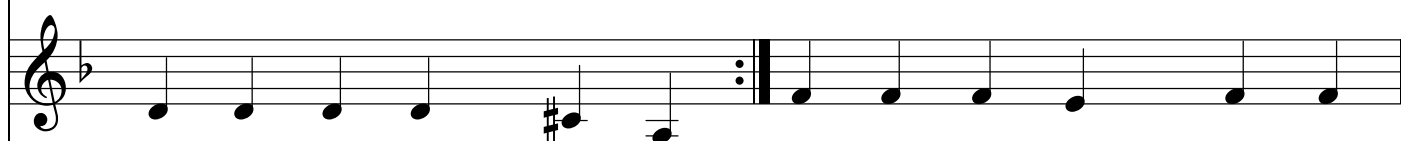
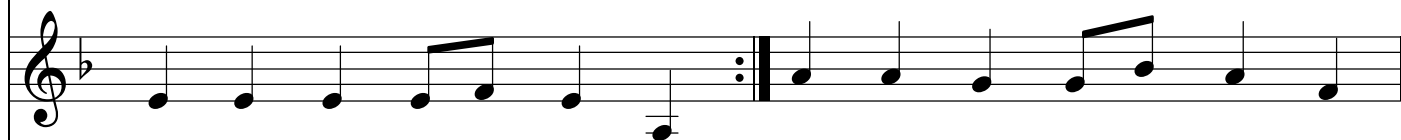
34





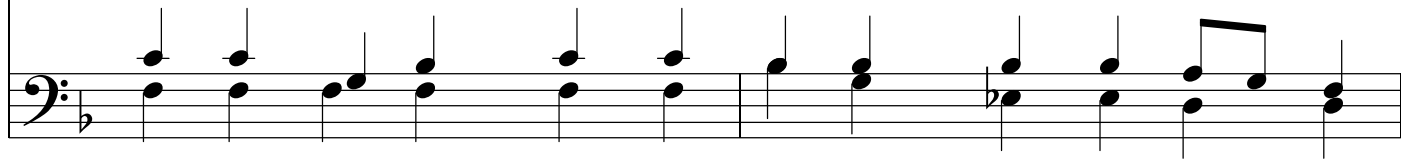
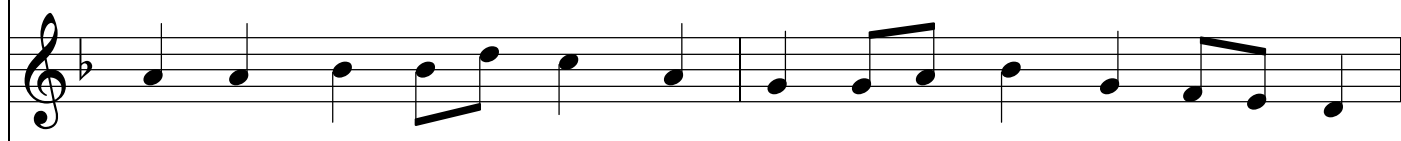
бі - да на - по\_\_\_ і - ла. 5.І ча - си ро\_\_\_ зра - ди  
від на - па - сті\_\_\_ зло - ї

36



чи ко - лись на\_\_\_ ста - нуть, і ро\_\_\_ ки скор - бо\_\_\_ ти

38



40

вда - ли - ні роз - та - нуть.

The image shows a musical score for a vocal line. It consists of four staves. The top three staves are in treble clef with a key signature of one flat (B-flat). The bottom staff is in bass clef. The melody is written in a 4/4 time signature. The lyrics are 'вда - ли - ні роз - та - нуть.' The first staff contains the melody and the lyrics. The second and third staves are identical to the first. The fourth staff is a bass line consisting of a series of quarter notes: G2, F2, E2, D2, C2, and a final half note G1. The number '40' is written to the left of the second staff.