

Старый крест

Вступление

Musical notation for the introduction, starting with a 12/8 time signature and a forte (*f*) dynamic marking. The piece begins with a whole rest, followed by a series of notes: a dotted quarter note, an eighth note, a quarter note, a dotted quarter note, and a half note. The key signature changes to one flat (B-flat) at measure 6, and the time signature changes to 6/8. The introduction concludes with a 12/8 time signature.

Musical notation for the first verse, starting at measure 7. It features a melodic line with a dotted quarter note, an eighth note, and a quarter note, followed by a series of eighth notes. A circled number 1 and the text "1 куплет" are placed above the staff.

Musical notation for the second verse, starting at measure 11. It continues the melodic line with a circled number 2 above the staff.

Musical notation for the first chorus, starting at measure 14. It features a melodic line with a circled number 3 above the staff.

Musical notation for the first chorus, starting at measure 17. It features a melodic line with a circled number 3 and the text "Припев-1" above the staff.

Musical notation for the second chorus, starting at measure 21. It features a melodic line with a circled number 4 above the staff.

Musical notation for the second chorus, starting at measure 25. It features a melodic line with a circled number 5 and the text "2 куплет" above the staff.

6
30**7**
34

Припев - 2

**8**
38**9** Проигрыш

42

**10**

46



49

**11** куплет

52



12



13

Припев 3 - подпевает зал

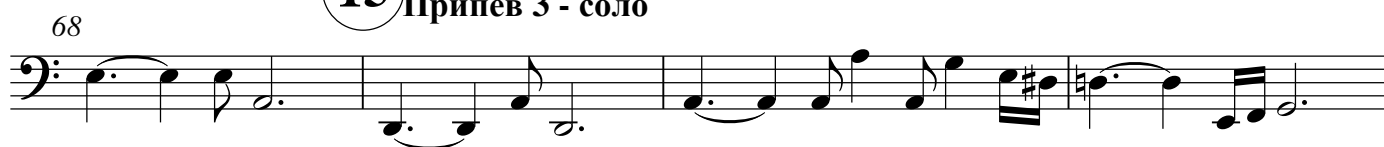


14



15

Припев 3 - соло

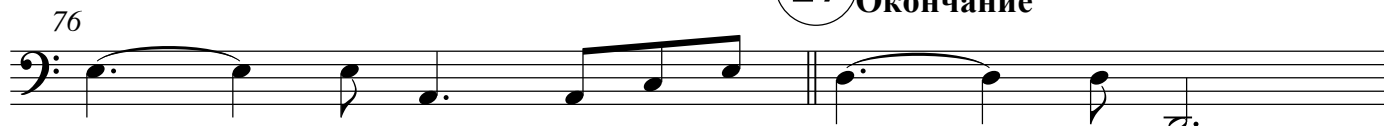


16



17

Окончание



78

