

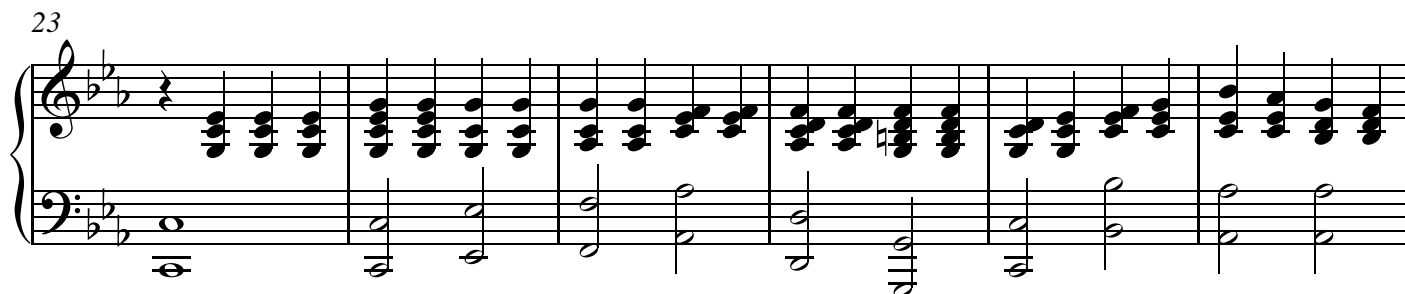
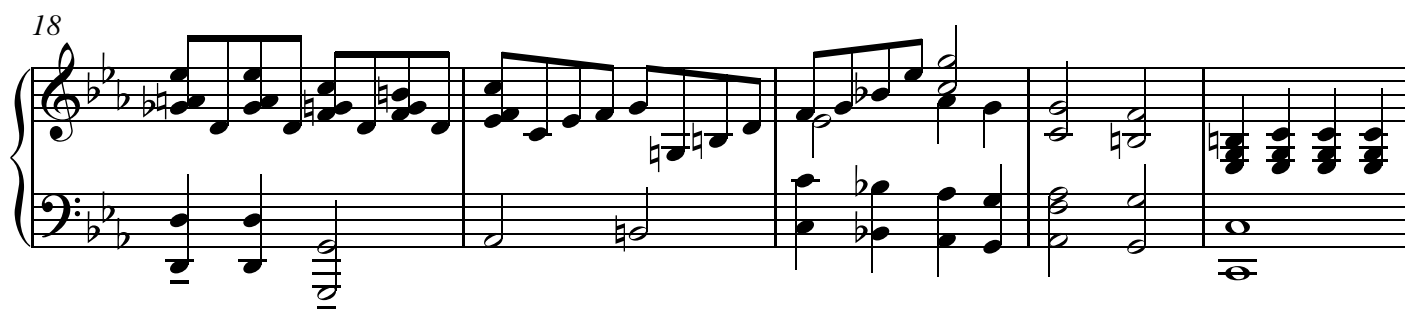
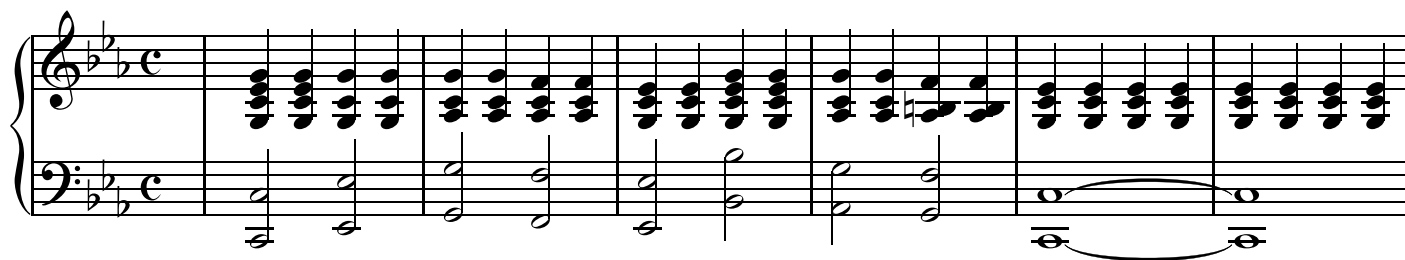
Piano

Голгофа ("Прости им, Отче")

Г. Колесникова

М.В. Мороз, 2016
(акк-т А.Звертовской)

♩ = 80



V.S.

34

Measures 34-37 of a piano piece. The key signature has three flats (B-flat, E-flat, A-flat). The melody in the right hand features eighth-note patterns and some chromaticism. The left hand provides a steady accompaniment with eighth notes and some chords.

38

Measures 38-43. Measures 38-42 feature a dense texture of chords in the right hand, while the left hand plays a simple bass line. Measure 43 shows a change in the right hand's texture, moving towards a more melodic line.

44

Measures 44-49. Measures 44-48 consist of a series of chords in the right hand, with the left hand playing a simple bass line. Measure 49 introduces a more active melody in the right hand.

50

Measures 50-53. Measures 50-51 feature a melodic line in the right hand with some rests. Measures 52-53 show a more active melody in the right hand, with the left hand providing a simple bass line.

54

Measures 54-59. Measures 54-58 feature a dense texture of chords in the right hand, with the left hand playing a simple bass line. Measure 59 shows a change in the right hand's texture, moving towards a more melodic line.

60

Measures 60-64. Measures 60-63 feature a dense texture of chords in the right hand, with the left hand playing a simple bass line. Measure 64 shows a change in the right hand's texture, moving towards a more melodic line.