

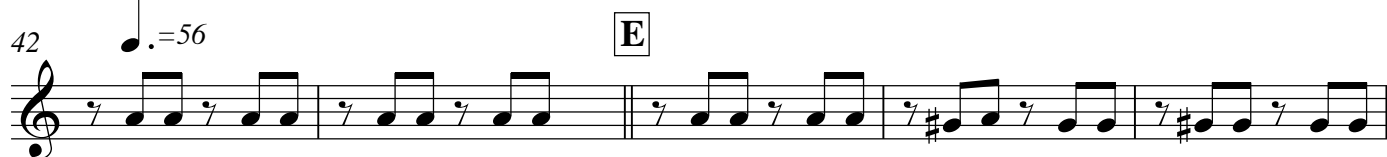
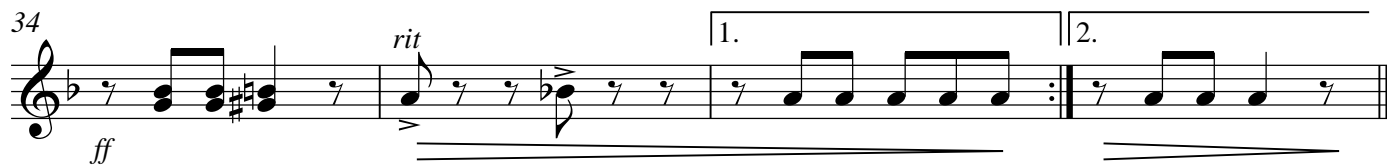
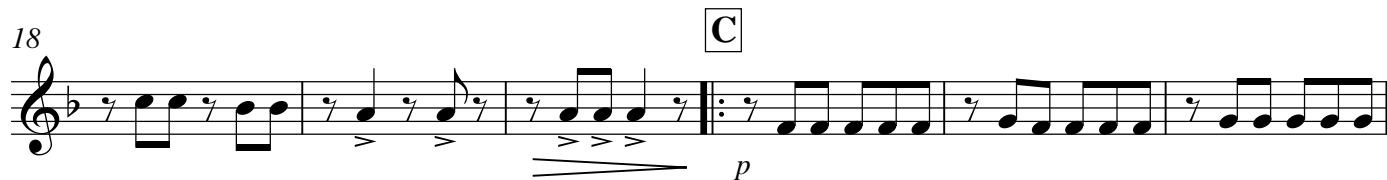
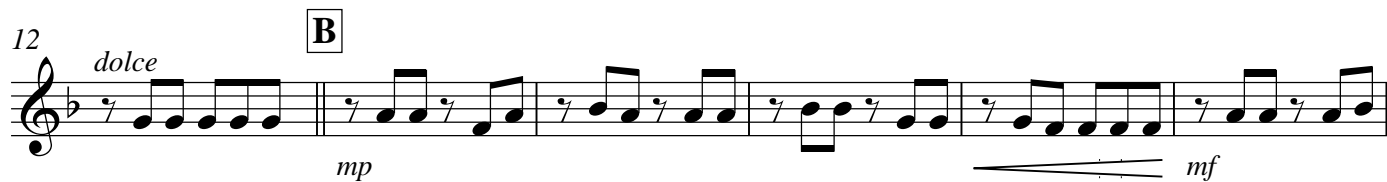
Композиция на темы гимнов

"Ближе Господь к Тебе" и "Так уж бывает летней порой!"

Euphonium

Arr. V. BUDU

Andantino $\text{♩} = 42$



Euphonium

47

Musical notation for Euphonium, measures 47-61. Measure 47: Treble clef, key signature of one sharp (F#), quarter notes G4, A4, B4, C5. Measure 48: Treble clef, key signature of one sharp, quarter notes G4, A4, B4, C5. Measure 49: Treble clef, key signature of one sharp, quarter notes G4, A4, B4, C5. Measure 50: Treble clef, key signature of one sharp, quarter notes G4, A4, B4, C5. Measure 51: Treble clef, key signature of one sharp, quarter notes G4, A4, B4, C5. Measure 52: Treble clef, key signature of one sharp, quarter notes G4, A4, B4, C5. Measure 53: Treble clef, key signature of one sharp, quarter notes G4, A4, B4, C5. Measure 54: Treble clef, key signature of one sharp, quarter notes G4, A4, B4, C5. Measure 55: Treble clef, key signature of one sharp, quarter notes G4, A4, B4, C5. Measure 56: Treble clef, key signature of one sharp, quarter notes G4, A4, B4, C5. Measure 57: Treble clef, key signature of one sharp, quarter notes G4, A4, B4, C5. Measure 58: Treble clef, key signature of one sharp, quarter notes G4, A4, B4, C5. Measure 59: Treble clef, key signature of one sharp, quarter notes G4, A4, B4, C5. Measure 60: Treble clef, key signature of one sharp, quarter notes G4, A4, B4, C5. Measure 61: Treble clef, key signature of one sharp, quarter notes G4, A4, B4, C5. Dynamics: mf (measures 52-56), f (measures 61-65). Performance instructions: 'za2r' (measures 58-59), 'sf' (measures 64-65), '42' (measure 61), '=60' (measure 64).