

I Sing the Mighty Power of God

$\text{♩} = 120$
uptempo

tune: ELLACOMBE

words by Isaac Watts
music: *Gesangbuch der Herzogl*
arr. Don Chapman

G Em7 Csus2 Dsus4

5

unison

1. I
2. I

G Em7 Csus2 Dsus4

9

sing the — might - y power of God, that made — the moun - tains
 sing the — good - ness of the Lord, that filled — the earth with

G Em7 Csus2 Dsus4

12

men on part

rise, That spread the flow - ing seas a - broad, and
 food, He formed the crea - tures with His Word, and

G G Em7

15

parts

built the loft - y skies. I sing the wis - dom
 then pro - nounced them good. Lord, how Thy won - ders

Csus2 Dsus4 G G/B

18

unison

that or - dained the sun to rule the day; The
 are dis - played, wher - e'er I turn my eye, If

Dsus4 D Em7 Csus2 Dsus4 D

21

men on part

parts

moon shines full at His com - mand, and all the stars o -
 I sur - vey the ground I tread, or gaze up - on the

G **Em7** **Csus2** **Dsus4**

24

unison

bey. 2. 1

G **Em7** **Csus2** **Dsus4**

28

unison

sky! *mp* 3. There's

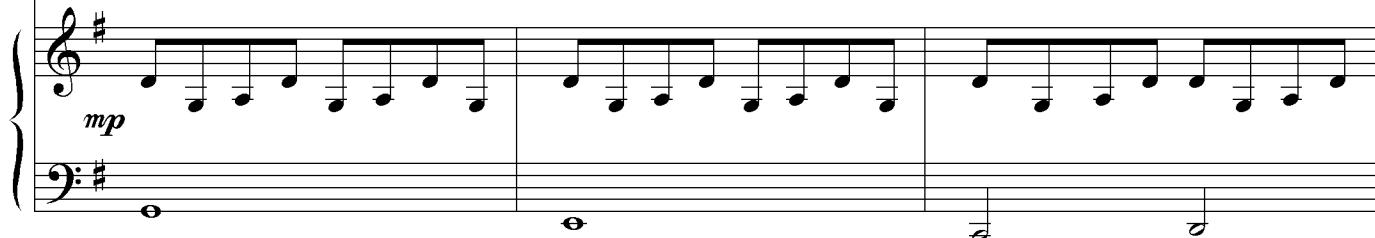
G **Em7** **Csus2** **Dsus4**

32



not a__ plant or flower be - low, but makes__ Thy glo - ries

G Em7 Csus2 Dsus4



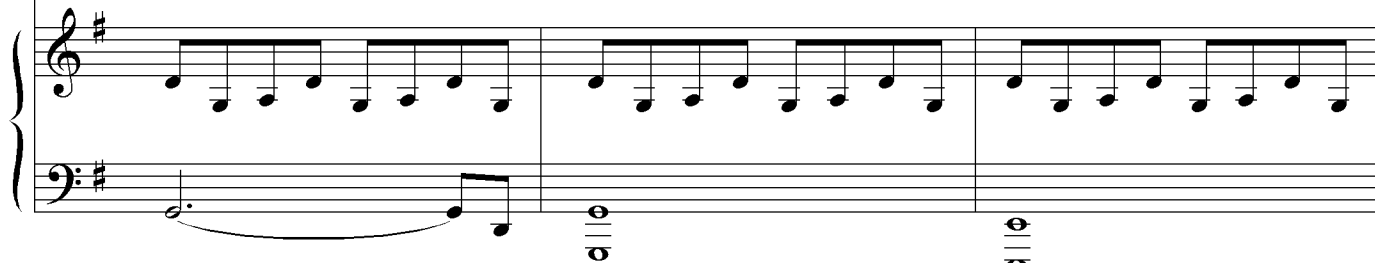
35

men on part



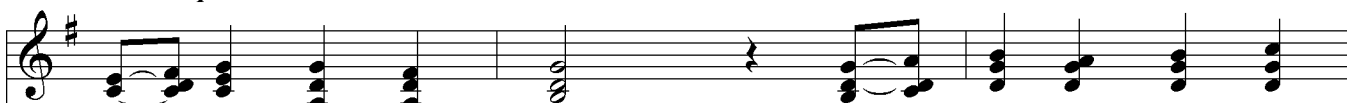
known, And clouds a - rise, and tem - pests blow, by

G G Em7



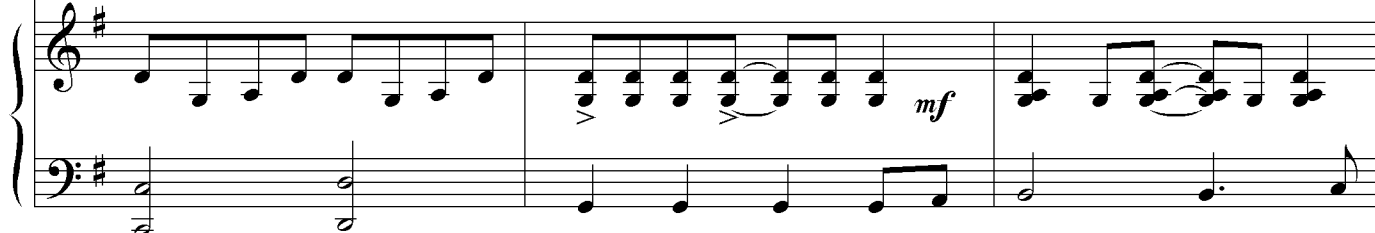
38

parts



or - der from Thy throne; *mf* While__ all that bor - rows

Csus2 Dsus4 G G/B



41

unison

life from Thee is ev - er in Thy care; And

Dsus4 D Em7 Csus2 Dsus4 D

44

men on parts

parts

ev - ery - where that man can be, Thou, God art pres - ent

G Em7 Csus2 Dsus4

47

unison

49

there. *f* While all that bor - rows

G Em7 Csus2

50

Vocal line for measure 50, starting with a treble clef and a key signature of one sharp (F#). The melody consists of quarter and eighth notes.

life from___ Thee is___ ev - er in Thy care; And

Dsus4

Em7

Csus2

Dsus4

Piano accompaniment for measure 50, featuring a grand staff with treble and bass clefs. The right hand plays chords and moving lines, while the left hand provides a steady bass line. Chord symbols are placed above the staff.

53

men on part

parts

rit.

Vocal line for measure 53, starting with a treble clef and a key signature of one sharp (F#). The melody includes a *rit.* marking. The line ends with a double bar line.

ev - ery - where that man can be, Thou, God___ art pres - ent there.

G

Em7

Csus2

Dsus4

G

Piano accompaniment for measure 53, featuring a grand staff with treble and bass clefs. The right hand plays chords and moving lines, while the left hand provides a steady bass line. Chord symbols are placed above the staff. A *rit.* marking is present in the right hand.