

Воскрес Христос

Виолончели

Подвижно, созерцательно

9

[illegible]

15

15

The 15th measure of the musical score for 'The Rose Tree' is shown. It begins with a treble clef and a key signature of one flat (B-flat). The measure starts with a half note G4, followed by a whole rest. On the third beat, there is a first ending bracket labeled '1' above the staff, with the instruction 'pizz' (pizzicato) written below it. The melody continues with a quarter note A4, a quarter note G4, a quarter note F4, and a quarter note E4. The measure concludes with a double bar line and a 2/4 time signature.

20

20

arco

mf

25

25

mp *p*

31

31

mp *mf*

36

36

36

40

40

The musical score for the 40th measure is written on a single staff in bass clef with a key signature of one flat (B-flat). The measure is divided into two parts by a double bar line. The first part consists of a half note B-flat, a half note A, and a half note G. The second part consists of a half note F, a half note E, and a half note D. The measure is marked with a dynamic of *mp* (mezzo-piano) at the beginning and *mf* (mezzo-forte) at the end. A box with the number 4 is placed above the staff. The time signature is 2/4.

45

45

2

cresc.

51

51

5

mf

2

Виолончели

56

6 *div.*

61

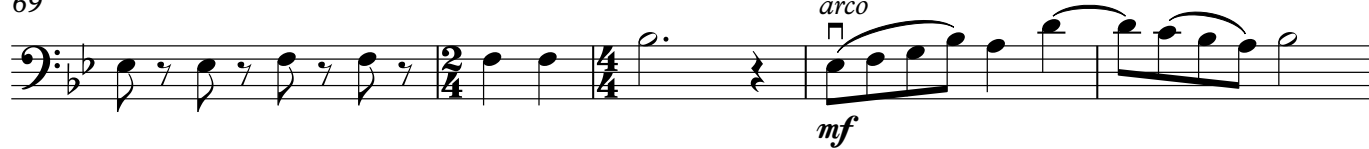


65

7

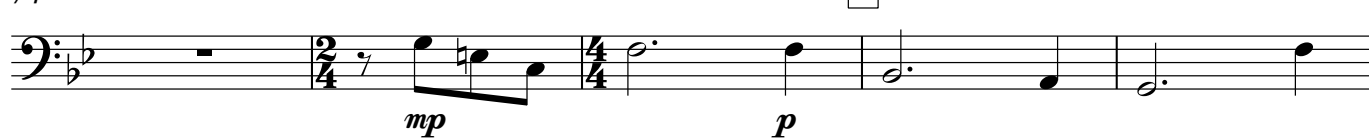


69

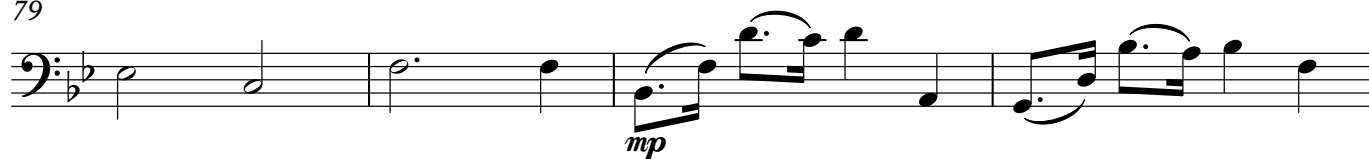
arco

74

8



79



83

