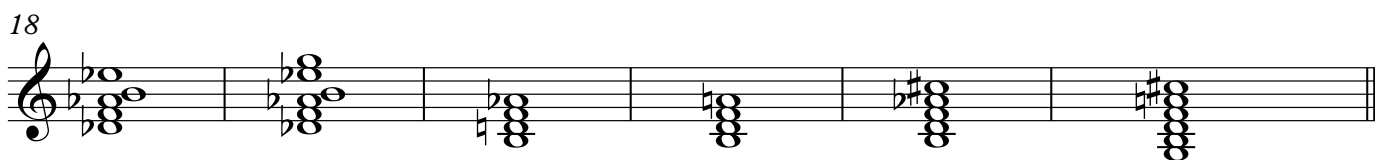
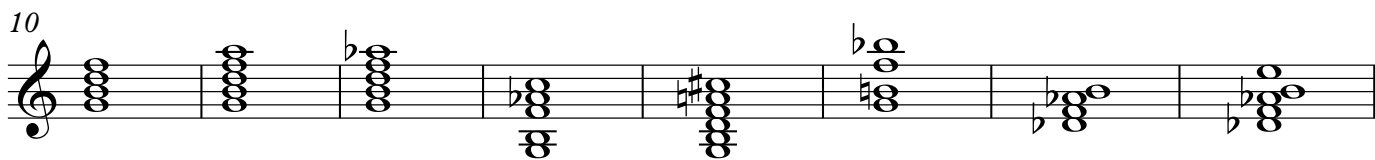


Джазовая диссонантная гармония

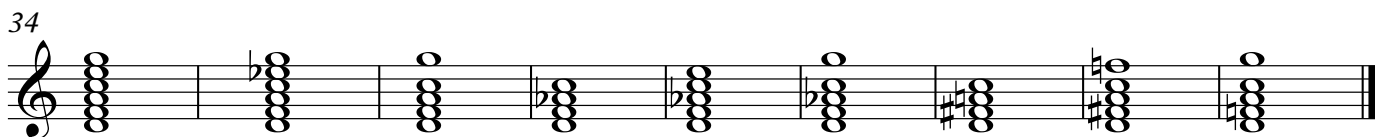
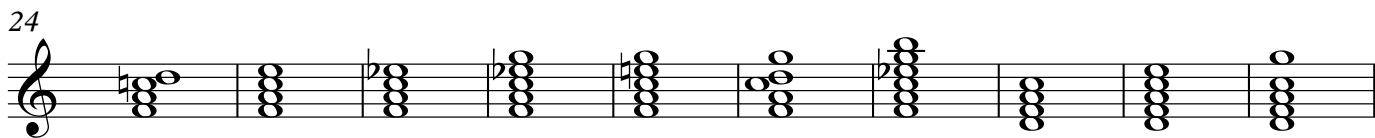
тоническая функция (в мажоре)



доминантовая функция




субдоминантовая функция



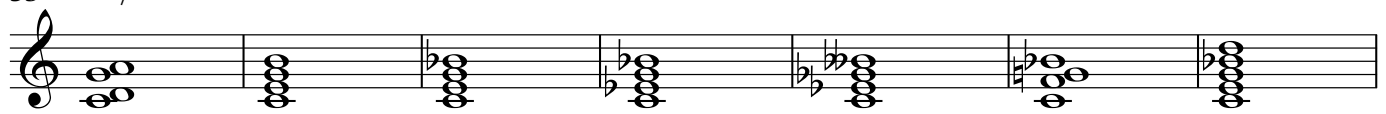
Нотация джазовой гармонии:

43 C Cmaj Cm Cdim Csus⁴ C² C² C⁶ Cm⁶ C^{6/5}



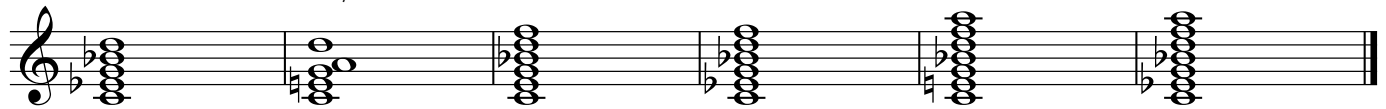
This musical staff shows ten measures of chords in C major. The chords are: C (measure 43), Cmaj (measure 44), Cm (measure 45), Cdim (measure 46), Csus⁴ (measure 47), C² (measure 48), C² (measure 49), C⁶ (measure 50), Cm⁶ (measure 51), and C^{6/5} (measure 52). Each chord is represented by a treble clef and a staff with notes and accidentals.

53 C^{2/5} Cmaj⁷ C⁷ Cm⁷ Cdim⁷ Csus⁷ C⁹



This musical staff shows seven measures of chords in C major. The chords are: C^{2/5} (measure 53), Cmaj⁷ (measure 54), C⁷ (measure 55), Cm⁷ (measure 56), Cdim⁷ (measure 57), Csus⁷ (measure 58), and C⁹ (measure 59). Each chord is represented by a treble clef and a staff with notes and accidentals.

60 Cm⁹ Cm^{9/6} C¹¹ Cm¹¹ C¹³ Cm¹³



This musical staff shows six measures of chords in C major. The chords are: Cm⁹ (measure 60), Cm^{9/6} (measure 61), C¹¹ (measure 62), Cm¹¹ (measure 63), C¹³ (measure 64), and Cm¹³ (measure 65). Each chord is represented by a treble clef and a staff with notes and accidentals.