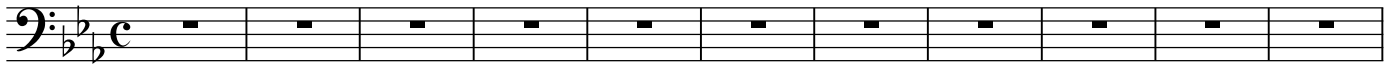


Радость радость непрестанно

Arranger: Hans-Werner Groß

1



2

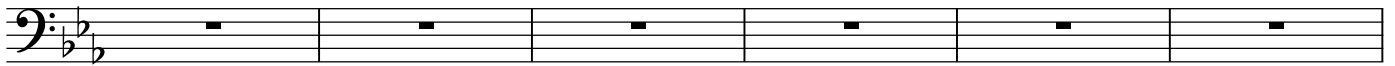
12



17



3



4

27



32



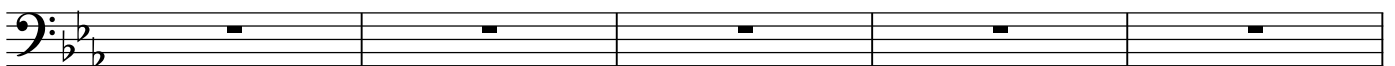
5



41



6



Full Score

7
50

A single musical staff in bass clef with a key signature of three flats. It begins with a whole rest. The first measure contains a dotted half note chord of G2 and B1. The second measure contains a dotted half note chord of G2 and B1. The third measure contains a dotted half note chord of G2 and B1. The fourth measure contains a dotted half note chord of G2 and B1.

52

A musical staff in bass clef with a key signature of three flats. It starts with a dotted half note chord of G2 and B1. This is followed by a series of eighth notes: G2, A2, B2, C3, D3, E3, F3, G3. The staff concludes with a dotted half note chord of G2 and B1, marked *pp.*

8

57

A musical staff in bass clef with a key signature of three flats. It begins with a dotted half note chord of G2 and B1. This is followed by a series of eighth notes: A2, B2, C3, D3, E3, F3, G3, A3. The staff concludes with a dotted half note chord of G2 and B1.

9

63

A musical staff in bass clef with a key signature of three flats. It begins with a whole rest. The first measure contains a dotted half note chord of G2 and B1. The second measure contains a dotted half note chord of G2 and B1. The third measure contains a dotted half note chord of G2 and B1. The fourth measure contains a dotted half note chord of G2 and B1.

66

A musical staff in bass clef with a key signature of three flats. It begins with a dotted half note chord of G2 and B1. This is followed by a series of eighth notes: A2, B2, C3, D3, E3, F3, G3. The staff concludes with a dotted half note chord of G2 and B1.

69

A musical staff in bass clef with a key signature of three flats. It contains six measures of whole rests, followed by a dotted half note chord of G2 and B1.

10
76

A musical staff in bass clef with a key signature of three flats. It begins with a dotted half note chord of G2 and B1. This is followed by a series of eighth notes: A2, B2, C3, D3, E3, F3, G3. The staff concludes with a dotted half note chord of G2 and B1.

11

81

A musical staff in bass clef with a key signature of three flats. It contains six measures of whole rests.

12

86

A musical staff in bass clef with a key signature of three flats. It begins with a whole rest. The first measure contains a dotted half note chord of G2 and B1. The second measure contains a dotted half note chord of G2 and B1. The third measure contains a dotted half note chord of G2 and B1. The fourth measure contains a dotted half note chord of G2 and B1.

Full Score

Musical score for bass clef, measures 97-105. The score is written in a key signature of two flats (B-flat and E-flat) and a common time signature. The notation includes various rhythmic values such as quarter notes, eighth notes, and sixteenth notes, along with rests and dynamic markings. The measures are numbered 13, 14, 15, 100, and 16. Measure 13 starts at measure 97. Measure 14 starts at measure 95. Measure 15 starts at measure 103. Measure 100 starts at measure 100. Measure 16 starts at measure 105. The score concludes with a double bar line at the end of measure 105.