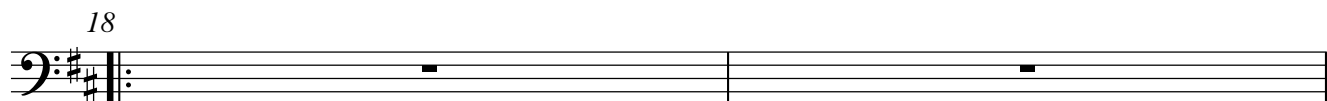
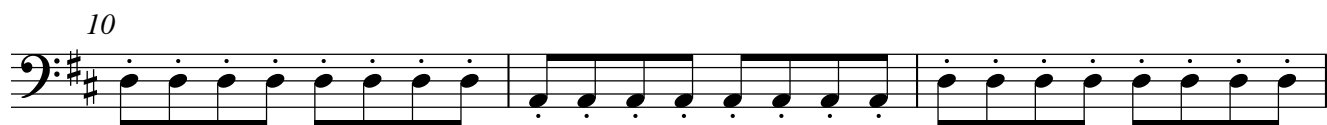


Bassoon

# I Know Whom I Have Believed



# Bassoon

25

Measures 25-27: Measure 25 starts with a whole rest. Measure 26 begins with a grace note followed by a quarter note. Measure 27 contains a continuous eighth-note pattern.

28

Measures 28-30: Measure 28 is a quarter-note pattern. Measure 29 is a dotted-quarter note pattern. Measure 30 is a quarter-note pattern. A first ending bracket covers measures 29-30, with a second ending bracket covering measure 30.

31

Measures 31-34: Measure 31 is a dotted-quarter note pattern. Measure 32 is a quarter-note pattern. Measure 33 features a sixteenth-note triplet. Measure 34 is a quarter note with an accent (>) and a fermata.

35

Measures 35-38: Measure 35 is a quarter note with an accent (>) and a fermata. Measure 36 is a quarter-note pattern. Measure 37 is a quarter note with an accent (>) and a fermata. Measure 38 is a quarter-note pattern.

39

Measures 39-41: Measure 39 is a quarter-note pattern. Measure 40 is a quarter-note pattern. Measure 41 is a quarter note with a fermata.

42

Measures 42-45: Measure 42 is a whole rest with a fermata. Measure 43 begins with a grace note. Measure 44 is a quarter-note pattern. Measure 45 is a quarter-note pattern.

52

Measures 52-54: Measure 52 is a quarter-note pattern. Measure 53 is a dotted-quarter note pattern. Measure 54 is a quarter-note pattern.

55

Measures 55-57: Measure 55 is a dotted-quarter note pattern. Measure 56 is a quarter-note pattern. Measure 57 features a sixteenth-note triplet.

58

Measures 58-60: Measure 58 is a quarter-note pattern. Measure 59 is a dotted-quarter note pattern. Measure 60 is a quarter-note pattern.

# Bassoon

62

65

The image shows two staves of musical notation for a Bassoon. The first staff, labeled '62', contains four measures of music. It begins with a bass clef and a key signature of one sharp (F#). The first two measures consist of eighth-note patterns, and the last two measures consist of quarter-note patterns. The second staff, labeled '65', contains four measures. It starts with a bass clef and a key signature of one sharp. The first measure has a dynamic accent (>) over a quarter note. The second measure features a slur over a sixteenth-note triplet. The third measure has a dynamic accent (>) over a quarter note. The fourth measure has a dynamic accent (>) over a quarter note and ends with a double bar line.