

# Piano

## Голос друга.

ПВВ

The piano score is written for two staves (treble and bass clef) in a key signature of one flat (B-flat) and a common time signature (C). The music is divided into six systems, each containing four measures. The first system starts with a measure marked with an '8' above the staff, indicating an eighth-note rhythm. The second system begins at measure 12. The third system begins at measure 16. The fourth system begins at measure 20. The fifth system begins at measure 24. The sixth system begins at measure 28. The score concludes with a double bar line and a repeat sign at the end of the final measure.

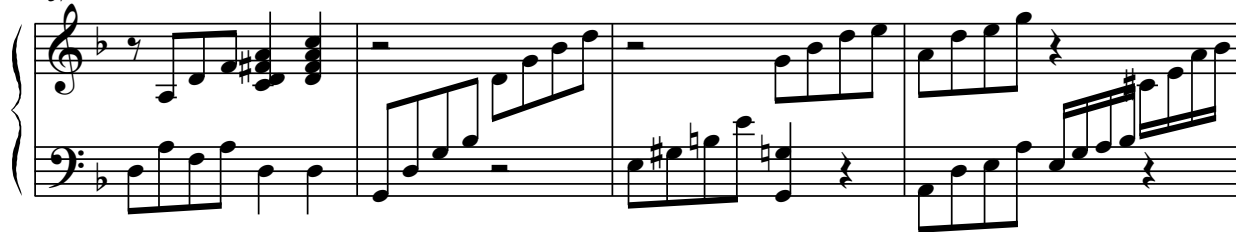
странники

2  
33

Голос друга.



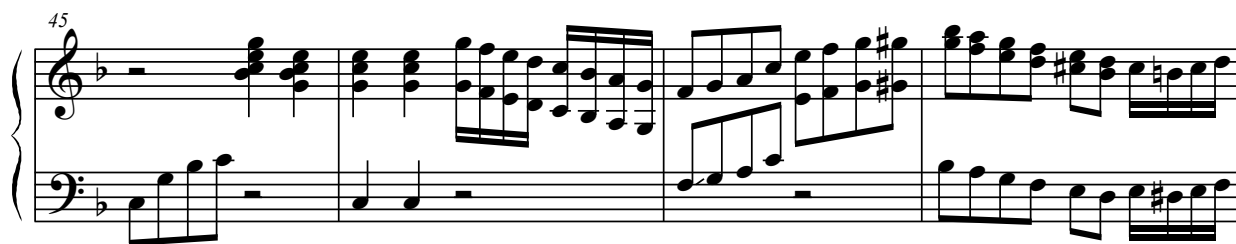
37



41



45



49



54



