

Вот иду сказал Он

В. Беличенко

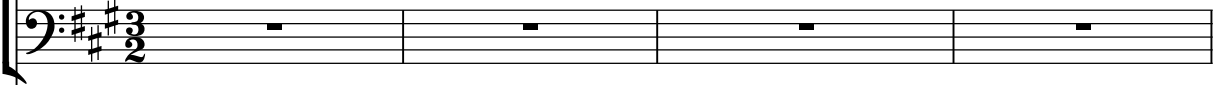
W.Sintschenko

Arr.Orchester: E.Jakimenko

Sopran
Alt



Tenor
Bass



Klavier



Violine I



Violine II



Violoncello I



Violoncello II



5 *tr*

"Вот, и ду! Ска-зал Он, Звез - ды рас-ту - пи - лись
 Стал Он че - ло - ве - ком На зем-ной пла - не - те,

tr

tr

tr

tr

tr

9

f

До ок-ра-ин не - ба воз - ве - ща-лось всем
 Для то-го ро - дил - ся, воз - ве - ща - лось Воз - ве - ща лось всем
 изг - нан был за стан, изг-нан был за Изг-нан был за стан

f

f

f

f

f

p

Тай - на во-пло щень - я, Ан - ге - лы скло - ни - лись,
 Чтоб по-том ро - ди - лись В ми - ре Божь-и де - ти,

p

p

И во-шел Спа - си - тель ночь-ю в Виф - ле - ем.
 Что - бы нас - ту - пи - ла Э - ра хрис - ти - ан.

f *p*

f

f *f* *f* *f*

poco cresc.

О - би-тав-ший в сла-ве, в све - те не-прис-туп - ном,

This system contains the vocal line and the first two staves of the piano accompaniment. The vocal line is in a soprano register, and the piano accompaniment consists of a treble and a bass staff. The key signature has three sharps (F#, C#, G#).

mf poco cresc.

This system contains the piano accompaniment for the second system, consisting of a treble and a bass staff. The music features a steady eighth-note accompaniment in the right hand and a more complex bass line with some chords in the left hand.

mf poco cresc.

This system contains the piano accompaniment for the third system, consisting of a treble and a bass staff. The right hand continues with eighth notes, while the left hand has a more active bass line.

mf poco cresc.

This system contains the piano accompaniment for the fourth system, consisting of a treble and a bass staff. The right hand continues with eighth notes, and the left hand has a steady bass line.

mf poco cresc.

This system contains the piano accompaniment for the fifth system, consisting of a treble and a bass staff. The right hand continues with eighth notes, and the left hand has a steady bass line.

mf poco cresc.

This system contains the piano accompaniment for the sixth system, consisting of a treble and a bass staff. The right hand continues with eighth notes, and the left hand has a steady bass line.

25

poco rit.

ff

И пре-вы-ше са - мых от-да-лен - ных звезд,

ff

poco rit.

a tempo

ff

poco rit.

a tempo

ff

poco rit.

a tempo

ff

poco rit.

a tempo

ff

poco rit.

a tempo

a tempo

Он со-шел на зем - лю, лю-дям стал дос-туп - ным

The first system features a vocal line in the upper staff and piano accompaniment in the lower staff. The vocal line begins with a dotted quarter note on 'Он', followed by eighth notes for 'со-шел на зем - лю,' and a quarter note on 'лю-дям стал дос-туп - ным'. The piano accompaniment consists of chords and moving lines in both hands.

The second system continues the piano accompaniment. The right hand features a melodic line with eighth notes and a dotted quarter note, while the left hand provides harmonic support with chords and moving lines.

The third system continues the piano accompaniment. The right hand has a melodic line with eighth notes and a dotted quarter note, and the left hand continues with harmonic support through chords and moving lines.

33

В прос - то-те ве - ли - кий, а в ве-личь - и прост.

f

f

f

f

40

2.

The first system consists of two staves, Treble and Bass clef, both in the key of A major. Measures 40 and 41 contain whole rests in both staves. Measure 42 contains a whole rest in the Treble staff and a whole note G in the Bass staff.

The second system consists of two staves, Treble and Bass clef, both in the key of A major. Measure 43 features a melodic line in the Treble staff and a bass line in the Bass staff. Measure 44 continues the melodic and bass lines. Measure 45 features a melodic line in the Treble staff and a whole note G in the Bass staff. The system concludes with a double bar line.

2.

The third system consists of four staves, two Treble and two Bass clefs, all in the key of A major. Measures 46 and 47 contain whole notes in all four staves. Measure 48 contains whole notes in all four staves. The system concludes with a double bar line.